



**Bihar State Industrial Development Corporation Ltd.
(A Govt. of Bihar Undertaking)**

1st Floor, Indira Bhawan, RC Singh Path, Boring Canal Road, Patna-800001
Phone No.-0612-2532165, E-mail: bside_bside@rediffmail.com,
Website: <http://www.bsidc.in>



SHORT TENDER NOTICE

TENDER NOTICE FOR 20 NODAL CONSTRUCTION FOR CHOWKI REARING 37'.5" X 32'

1. Bihar State Industrial Development Corporation Ltd. (BSIDC Ltd.), Patna invites sealed tenders in two bid form (Technical & Financial) separately from reputed contractor in India.

The 37'.5"X32' diagram can be also downloaded from Department of Industries Website: <http://industries.bih.nic.in>

2. Tenders (technical & financial) must be submitted in two separate envelopes on or before 3:00 P.M on **13.03.2019** at "BSIDC Ltd." Indira Bhawan, Patna-800 001. Techno-commercial bids will be opened on the same day i.e. **13.03.2019 at 5:00 P.M.**
3. The Earnest Money deposit of Rs. 4,00,000/- (Rupees four Lakhs) (refundable) must also be submitted by the bidder drawn in favour of **Bihar State Industrial Development Corporation Ltd." payable at Patna.**
4. Construction area for Nodal cum CRC Building are as follows :-

Sl. No.	Dist	Block	Numbers
1	Supaul	Saraigarh	01
		Basantpur	02
		Chhatarpur	01
2	Madhepura	Kumarkhand	03
		Madhepur Sadar	01
		Gwalpara	01
3	Saharsa	Satarkattia	01
		Patharghat	01
		Saurbajar	01
4	Araria	Raniganj	02
		Forbesganj	01
5	Purnea	Dhamdha	02
		Jalalgarh	01
6	Kishanganj	Kishanganj Sadar	01
7	Katihar	Falka	01
Total			20

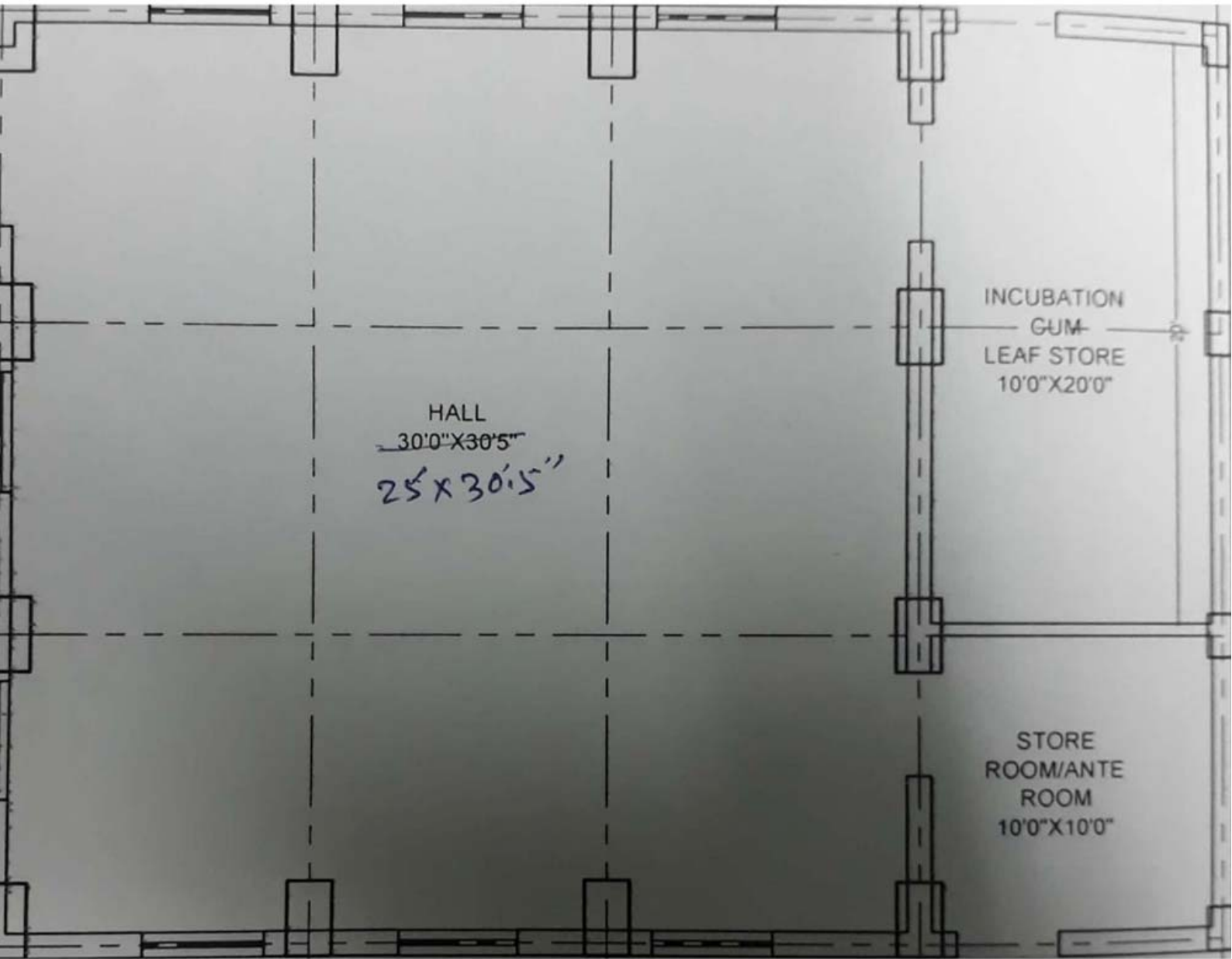
5. The estimated amount of Rs. 4.00 Crores (Rupees four crores) only.
6. BSIDC Ltd., Patna reserves the right to reject any or all the bids without assigning any reason whatsoever.

Chairman-cum-Managing Director
(Bihar State Industrial Development Corporation Ltd.)

SCHEDULE OF COLUMN (STEEL USED-Fe 500)

Sl. No.	COLUMN NAME	SIZE	MIX	REINFORCEMENT	
				MAIN	LAT TIES
1.	A1,A2,A3,A4,B1,B2,B3,B4, C1,C2,C3,C4,D1,D2,D3,D4	750 x 450	M20 (1:1½:3)	10-#20	
2.	E1,E2,E3,E4	300 x 450	M20	4-#16+4-#12	

FOR 8 NO. OF MAIN REINF



DETAIL OF PILES

SYMBOL	DIA OF PILE	DEPTH OF PILE (L)	NO OF U. R.	DEPTH OF 1st U. R.	DEPTH OF 2nd U. R.	DIA OF U. R.	MAIN REINF. mm	STIRRUPS	NO OF PILES
	12"	10M	2	7.6M	10M	30"(750mm)	5-10Ø	6mmØ @9"c/c	64

REIN. DETAILS IN PILE CAP

sl.	PILE CAP MARKED	COL. NO.	no. of piles in group	overall depth (D)	(m)	(s)	MIX	total nos of cap
1	PC1	A1,A2,A3,A4,B1,B2,B3,B4,C1,C2,C3,C4,D1,D2,D3,D4,E1,E2,E3,E4	4	24"	120@ 5"c/c	120@ 5"c/c	1:1.5:3	16